

Instructions for Rieder order list

Assistance in filling-in the Excel table Rieder order list



RIEDER

To be returned to Rieder – always as Excel file and PDF file.
Please fill form in only in German or in English.

Important: Because the file is imported directly, there must be no columns or lines added or deleted.

Structure of list

Table sheet 1: Project date - overview

- All cells marked blue must be filled-in.

Table sheet 2: Panels

Pos.No.

- Max. 10 characters, no repetition of names
- No blank spaces or special characters, the hyphen "-" and the underscore "_" are accepted
- Exception: öko skin – no position numbers are issued here.
- The position number serves the purpose of identifying the sheet clearly and unmistakably.
- The position number forms part of the barcode that is stuck to the back of each panel.

Type:

- R = regular (flat sheet, also in the case of diagonal cuts or cut-outs)
- U = U-shaped formpart
- L = L-shaped formpart
- C = special-form

Pcs:

- Quantity of necessary panels in whole units

Colour Code:

- | | | | | | | | |
|---------------|------|----------------|------|------------|------|--------------|------|
| • polar white | GR01 | • liquid black | GR07 | • burgundy | BR04 | • oak | TI03 |
| • off-white | GR02 | • cotton | NS03 | • merlot | BR05 | • walnut | TI04 |
| • ivory | GR03 | • vanilla | NS04 | • ebony | TI05 | • almond | NS05 |
| • silvergrey | GR04 | • sahara | NS01 | • terra | TI01 | • coralline | BR02 |
| • chrome | GR05 | • sandstone | NS02 | • green | GE01 | • terracotta | BR01 |
| • anthracite | GR06 | • oxide red | BR03 | • larch | TI02 | | |

Texture:

- | | | | | | | | |
|------------|------|-----------|------|---------------|------|-------------------|------|
| • standard | ST01 | • vintage | SI01 | • glossy | SI04 | • terrazzo black | AG03 |
| • groove | GM01 | • slate | SI02 | • luce silver | AG01 | • salt 'n' pepper | AG05 |
| • twine | GM04 | • pattern | P01 | • lumber | SI03 | | |

Surface Code:

- | | | | |
|---------------|------|--------------|------|
| • ferro | FI03 | • ferro plus | FI09 |
| • ferro light | FI02 | • ferro soft | FI08 |
| • matt | FI01 | | |

Thickness

- Select the panel thickness

Coating Code:

- HY01 for surface protection
- Basic protection is introduced automatically as a product characteristic and is included in the price. Nevertheless, please fill in this column.

Instructions for Rieder order list

Assistance in filling-in the Excel table Rieder order list



RIEDER

Additional info:

- Please indicate any perforations / cut-outs here.
- For perforated sheets or respectively perforated cut-outs, it is necessary to have a dxf drawing in accordance with the template

"2D 3D Vorlage dxf-format" (sheet contour as clean, closed sheets, each drilled hole indicated as a circle OR as a cross (absolutely do not mix circles and crosses)).

Quote item number:

- This column is filled by Rieder.

Length in mm:

- concrete skin \leq 5000 mm
- x-axis

Any deviation of the max. sizes only after coordination and formal endorsement issued by the Rieder Sales Team.

Width in mm:

- concrete skin \leq 1500 mm (for special textures \leq 1310 mm)
- y-axis

Please bear in mind the standard sizes:

concrete skin: 1200 x 2500 mm, 1200 x 3100 mm, 1200 x 3600 mm

Table sheet 3: Drillings

Pos.Nr.

- Must be identical with item number from "Tabellenblatt 2 Panels"
- Only indicate sheets that are going to be drilled
- Do not indicate sheets with cut-outs/perforations here, even if they are

going to be drilled! In data-processing terms, those sheets are recorded via the dxf-drawing, in accordance with the template "2D 3D Vorlage dxf-Format" (sheet contour drawn as clean, closed areas; each drilled hole drawn as circle OR cross; absolutely do not mix circles and crosses)

Drilling Code:

- Under cut drilled hole HSA
- Drilled-through hole DB
- Drilled hole for Rieder power anchor RPA

Drilling line No: consecutive numeration

- The drilling line 1 begins at the bottom
- 1 drilling line has only one line and the number 1
- 2 drilling lines have two lines and the numbers 1+2

- 3 drilling lines have three lines and the numbers 1+2+3
- If there is more than one line, for each line the Pos. No. and the type of drilling-operation must be filled-in again

X1-X30:

Measurement from the edge of the panel (bottom left corner) to the drill-hole (length per panel) in mm

- The drilling coordinates must be indicated for the visible side of the sheet

Y1, Y2:

Measurement from the edge of the panel (bottom left corner) to the drill-hole (width of the panel) in mm

Table sheet 4: Call offs_Abrufe

- To guarantee efficient project management, Rieder requires details on the number of requests and the preferred delivery times. If no notification is made as part of the data transfer we will be forced to allocate the delivery times for the requests based on the capacity available at that time. These may deviate from the standard delivery times for the individual product groups.

- If the customer postpones the delivery times, this has to be communicated immediately to take the changes into consideration as well as possible.
- The amounts can be stated for the products (details in m²) independently of the selected colour and surface. Textures (for example groove, twine) and aggregate (for example salt'n'pepper, luce silver) should be created as a separate request.

Instructions for Rieder order list

Assistance in filling-in the Excel table Rieder order list



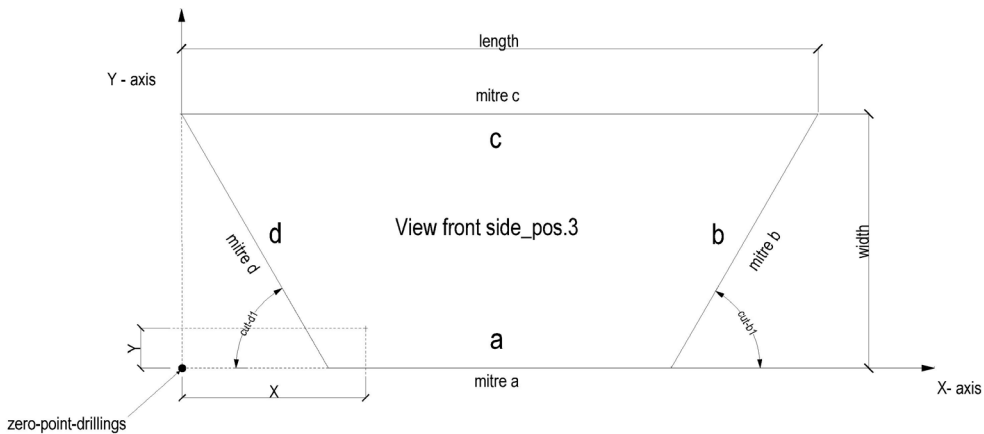
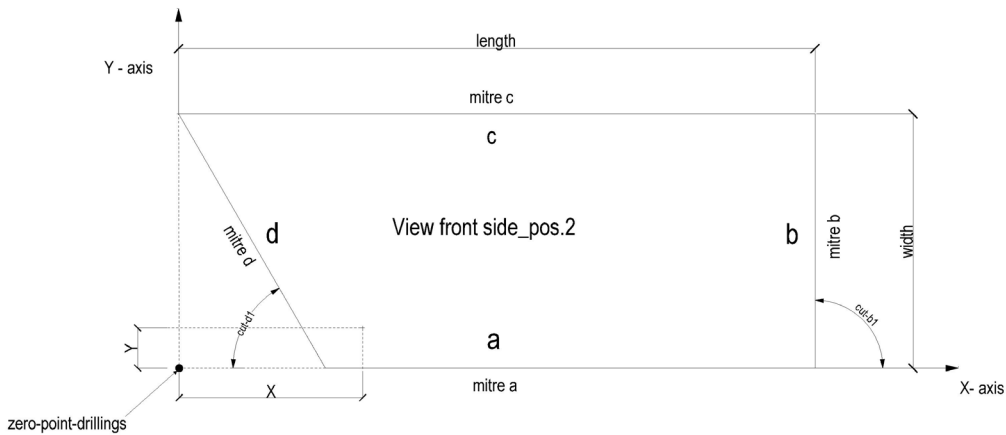
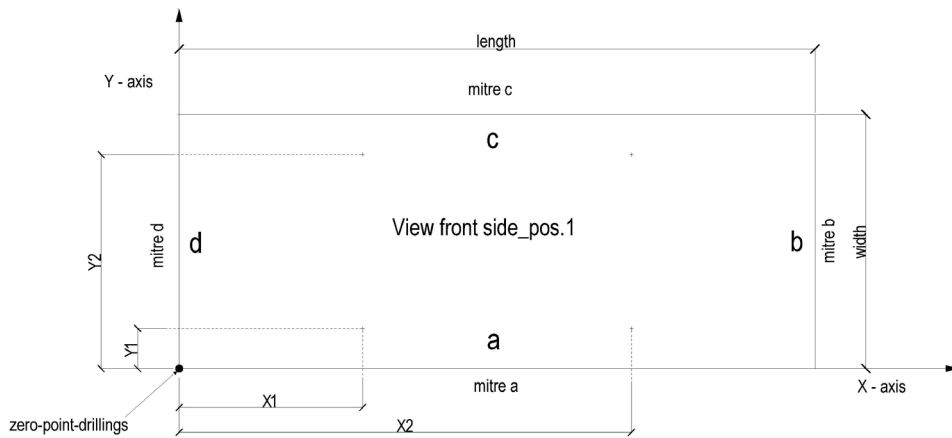
RIEDER

Drilling - flat panels

- If a flat panel has a raked cut, you have to use as type instead of R (rectangular) → T (trapezoid) then you have to fill in the column angle d1 and angle b1.
- If the raked cut is only on one side you have to type in on the other side

90°. For mitre cut you only have to type in the degrees of the mitre in the columns mitre a, b, c, or d (see "mitre cuts")

- If mitre cuts on the front side type in the column panel info "mitre front"



Instructions for Rieder order list

Assistance in filling-in the Excel table Rieder order list



RIEDER

Drilling lines

