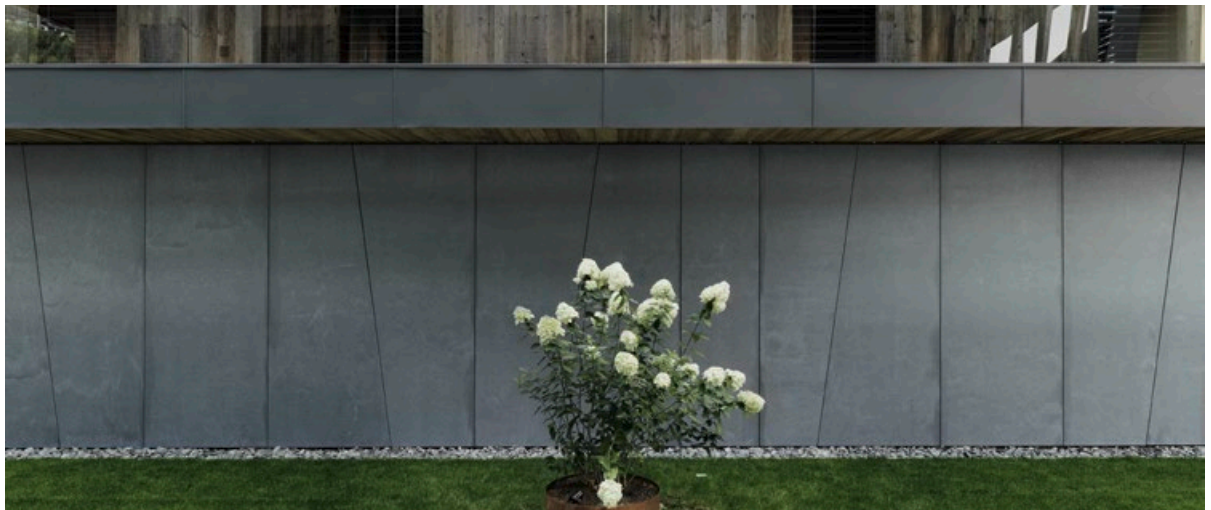


The natural imperfection and visual irregularity of the vintage panels give the facade a unique appearance and above all individuality, since no slab is like any other.



*anthracite matt*

<b>PRODUCT</b>	concrete skin, öko skin
<b>WIDTH</b>	1200 - 1310 mm (concrete skin), 70 - 302 mm (öko skin, ratio width to length = 1:10)
<b>LENGTH</b>	2100 - 4200 mm (concrete skin), 700 - 2500 mm (öko skin, ratio width to length = 1:10)
<b>THICKNESS</b>	13 mm
<b>COLOURS</b>	anthracite ( <i>custom colours on request</i> )
<b>SURFACE</b>	matt
<b>WEIGHT</b>	30 kg/m <sup>2</sup>
<b>FIXING</b>	rivets, adhesive, undercut anchor, Rieder Power Anchor (concrete skin & öko skin) screws, öko skin hidden fix (only for öko skin)
<b>PRICE</b>	€€€

13 mm